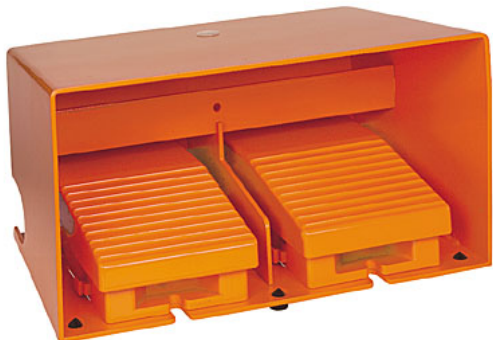


XPER3100D

double foot switch - IP66 - with cover - metallic
- orange - 2 NC + 2 NO



Main

Range of product	Harmony XPE
Product or component type	Foot switch
Material	Metal
Foot switch type	Double foot switch
Device short name	XPER
Protective cover	With
Trigger mechanism	Without trigger mechanism
Contacts operation	1 step
Contacts type and composition	2 x (1 NC + 1 NO)
Colour	Orange

Complementary

Positive opening	With conforming to EN/IEC 60947-5-1 appendix K
Connections - terminals	Screw clamp terminal : $\leq 1 \times 2.5 \text{ mm}^2$ with or without cable end Screw clamp terminal : $\leq 2 \times 1.5 \text{ mm}^2$ with or without cable end
Cable entry	2 entries tapped for Pg 16 cable gland
Mechanical durability	15000000 cycles
[Ie] rated operational current	0.27 A , 250 V , DC-13 , Q300 conforming to EN/IEC 60947-5-1 appendix A 3 A , 240 V , AC-15 , A300
[Ui] rated insulation voltage	300 V conforming to UL 508 300 V conforming to CSA C22-2 No 14 500 V , degree of pollution: 3 conforming to EN/IEC 60947-1 500 V , degree of pollution: 3 conforming to NF C 20-040 group C 500 V , degree of pollution: 3 conforming to VDE 0110 group C
[Uimp] rated impulse withstand voltage	6 kV conforming to EN/IEC 60947-1
Resistance across terminals	$\leq 25 \text{ m}\Omega$ conforming to IEC 60255-7 category 3 $\leq 25 \text{ m}\Omega$ conforming to NF C 93-050 method A
Short circuit protection	10 A cartridge fuse type gG conforming to VDE 0660-200 10 A cartridge fuse type gG conforming to EN/IEC 60947-5-1
Operational power in W	4 W DC-13 , operating rate: 60 cyc/mn ,5000000 cycles ,120 V , load factor: 0.5 conforming to EN/IEC 60947-5-1 appendix C 7 W DC-13 , operating rate: 60 cyc/mn ,5000000 cycles ,48 V , load factor: 0.5 conforming to EN/IEC 60947-5-1 appendix C 10 W DC-13 , operating rate: 60 cyc/mn ,5000000 cycles ,24 V , load factor: 0.5 conforming to EN/IEC 60947-5-1 appendix C
Physical characteristics	(11-12)NC (13-14)NO B
Product weight	5.9 kg

Environment

Standards	NF E 09-031
Product certifications	CSA FI
Protective treatment	TC
Ambient air temperature for operation	-25...70 °C
Ambient air temperature for storage	-40...70 °C
Vibration resistance	15 gn (f = 10...500 Hz) conforming to IEC 60068-2-6
Shock resistance	20 gn conforming to IEC 60068-2-27 150 gn conforming to NF E 09-031

The information provided in this documentation contains general descriptions and/or technical characteristics of the performance of the products contained herein. This documentation is not intended as a substitute for and is not to be used for determining suitability or reliability of these products for specific user applications. It is the duty of any such user or integrator to perform the appropriate and complete risk analysis, evaluation and testing of the products with respect to the relevant specific application or use thereof. Neither Schneider Electric Industries SAS nor any of its affiliates or subsidiaries shall be responsible or liable for misuse of the information contained herein.

Class of protection against electric shock	Class I conforming to NF C 20-030 Class I conforming to EN/IEC 61140
IP degree of protection	IP66 conforming to IEC 60529 IP669 conforming to NF C 20-010
RoHS EUR conformity date	0851
RoHS EUR status	Compliant